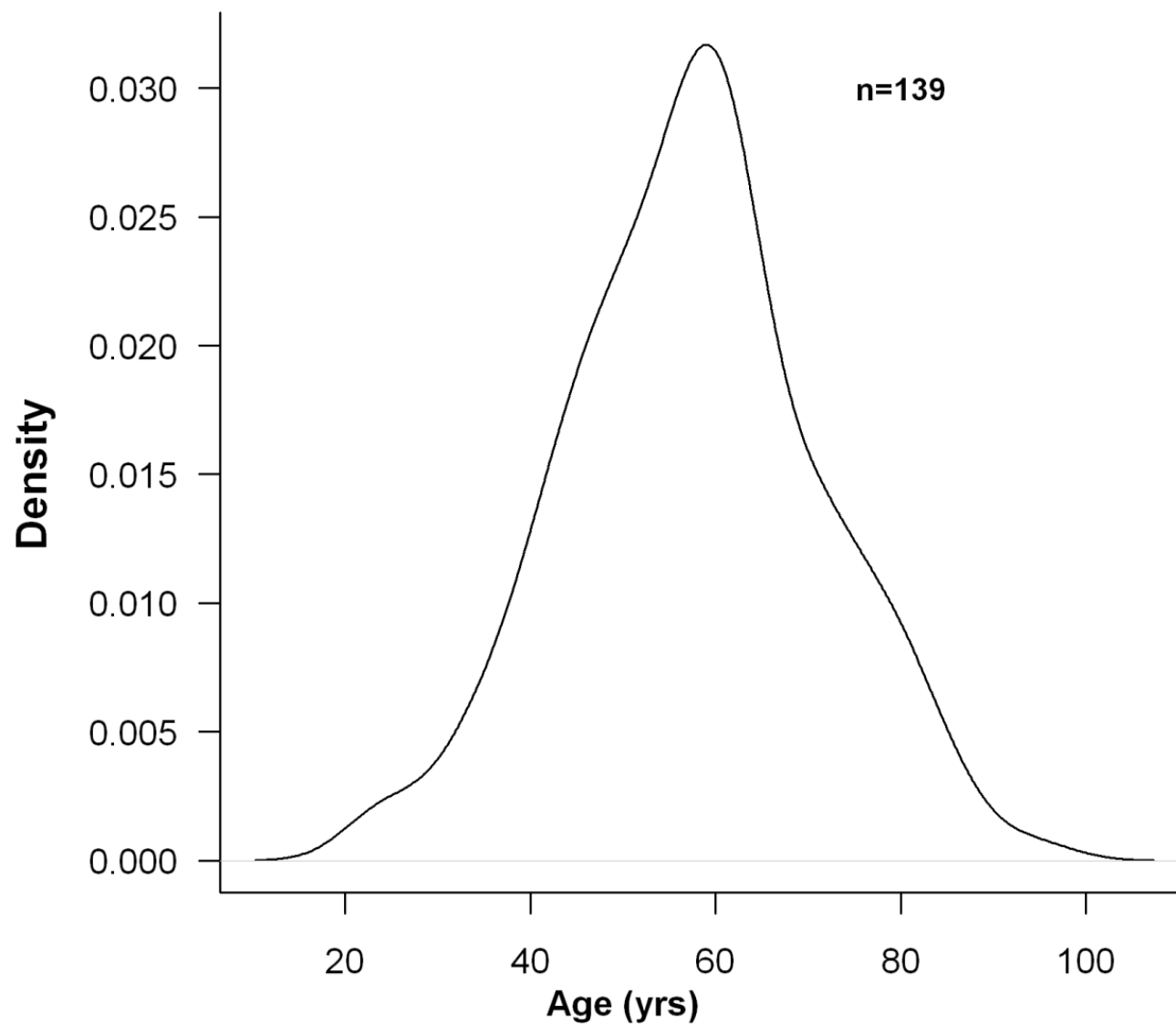


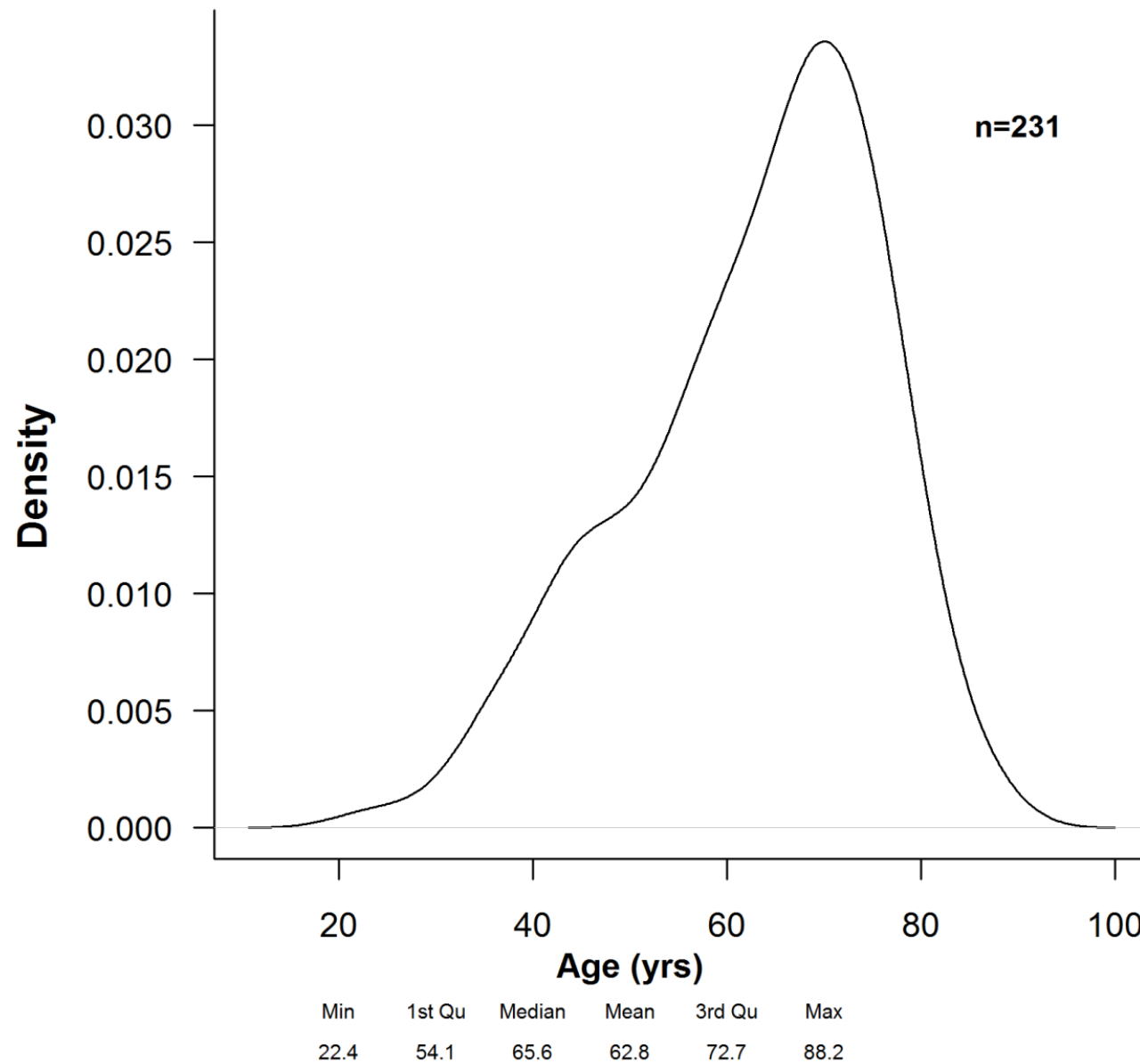
Age: Current patients



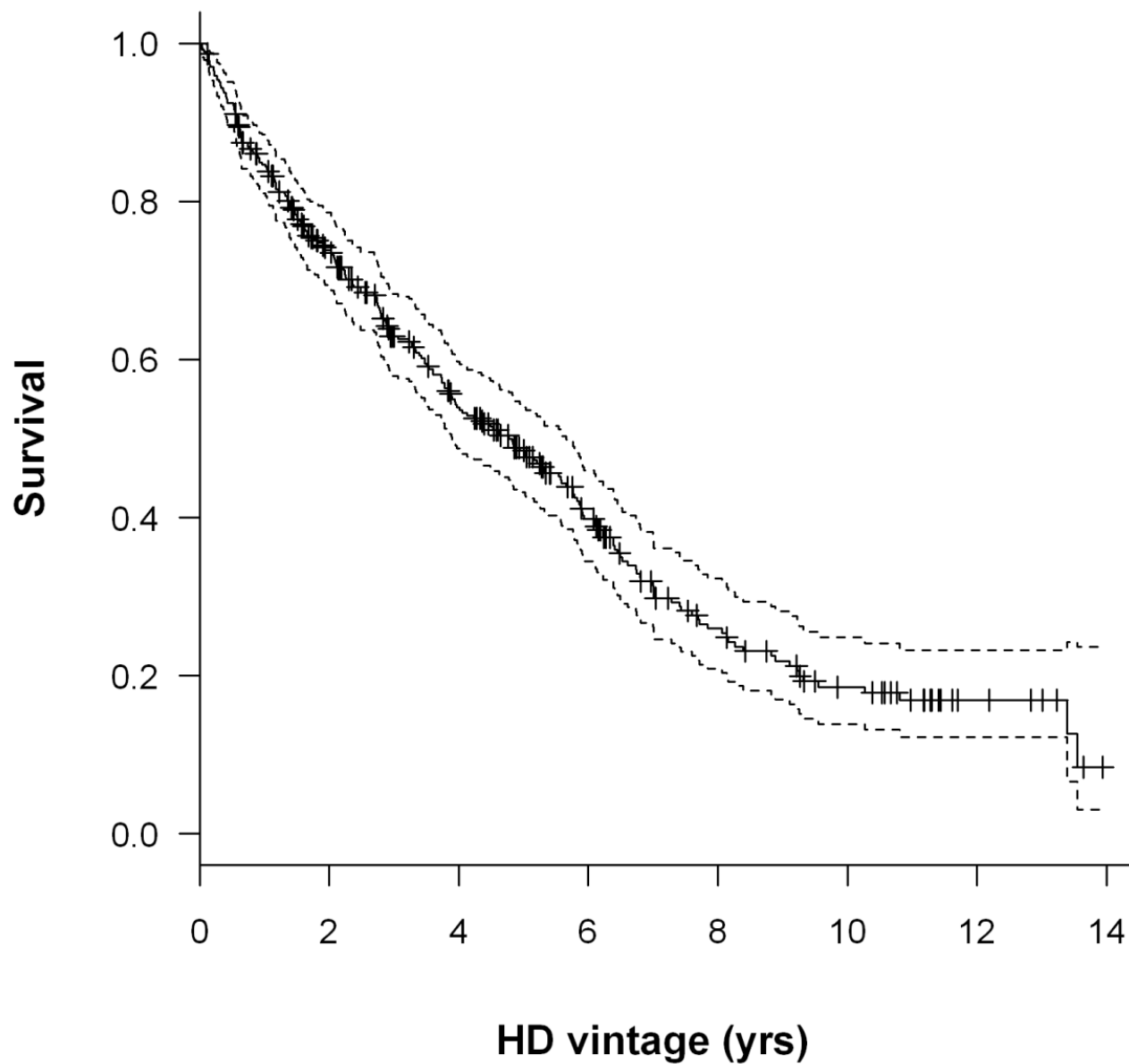
n=139

Min	1st Qu	Median	Mean	3rd Qu	Max
23.2	48.0	57.9	57.5	65.1	94.4

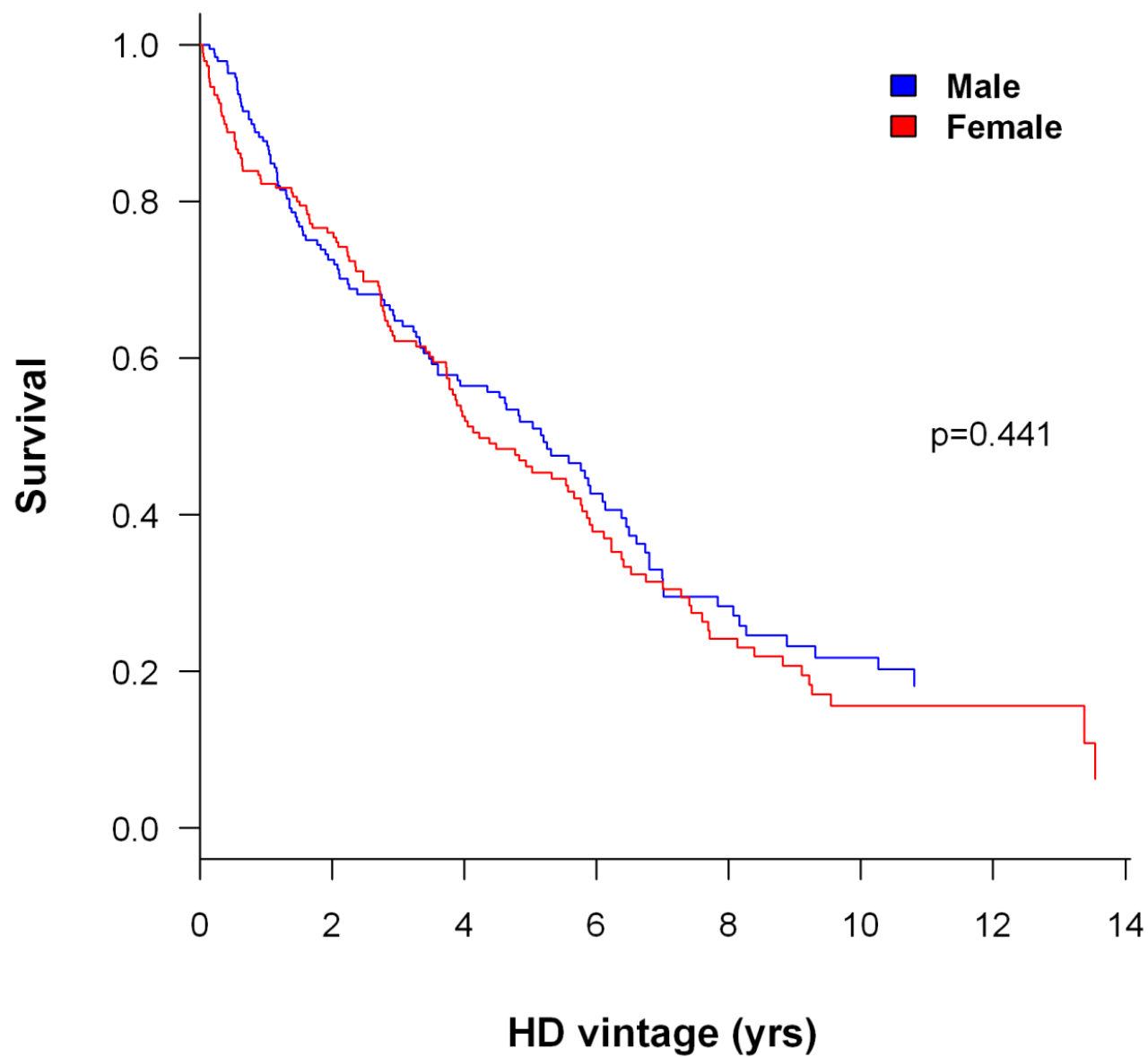
Age of death 1997 - 2011



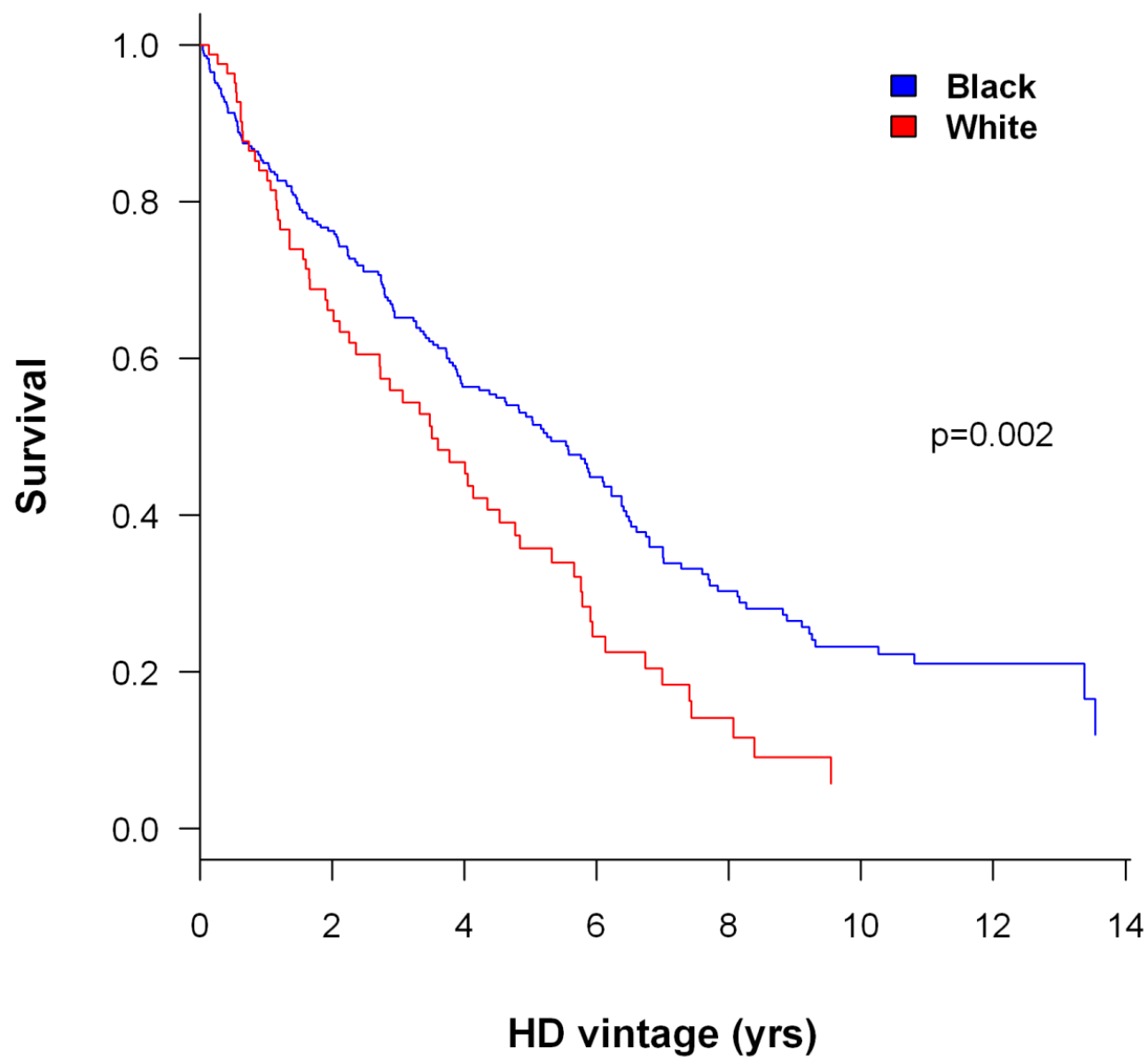
HD survival 1997~2011



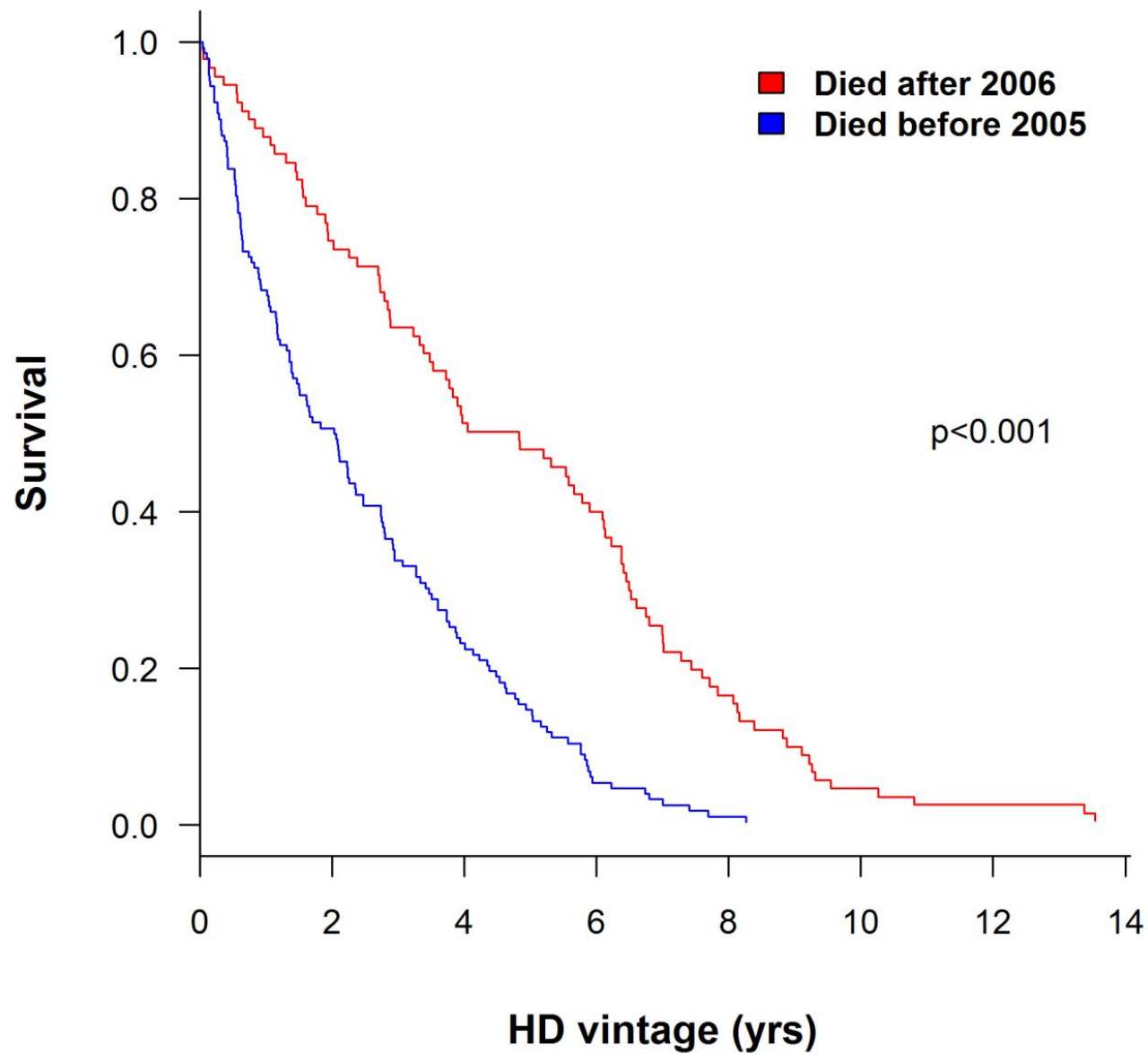
HD survival Male vs Female (adjusted for age, race)



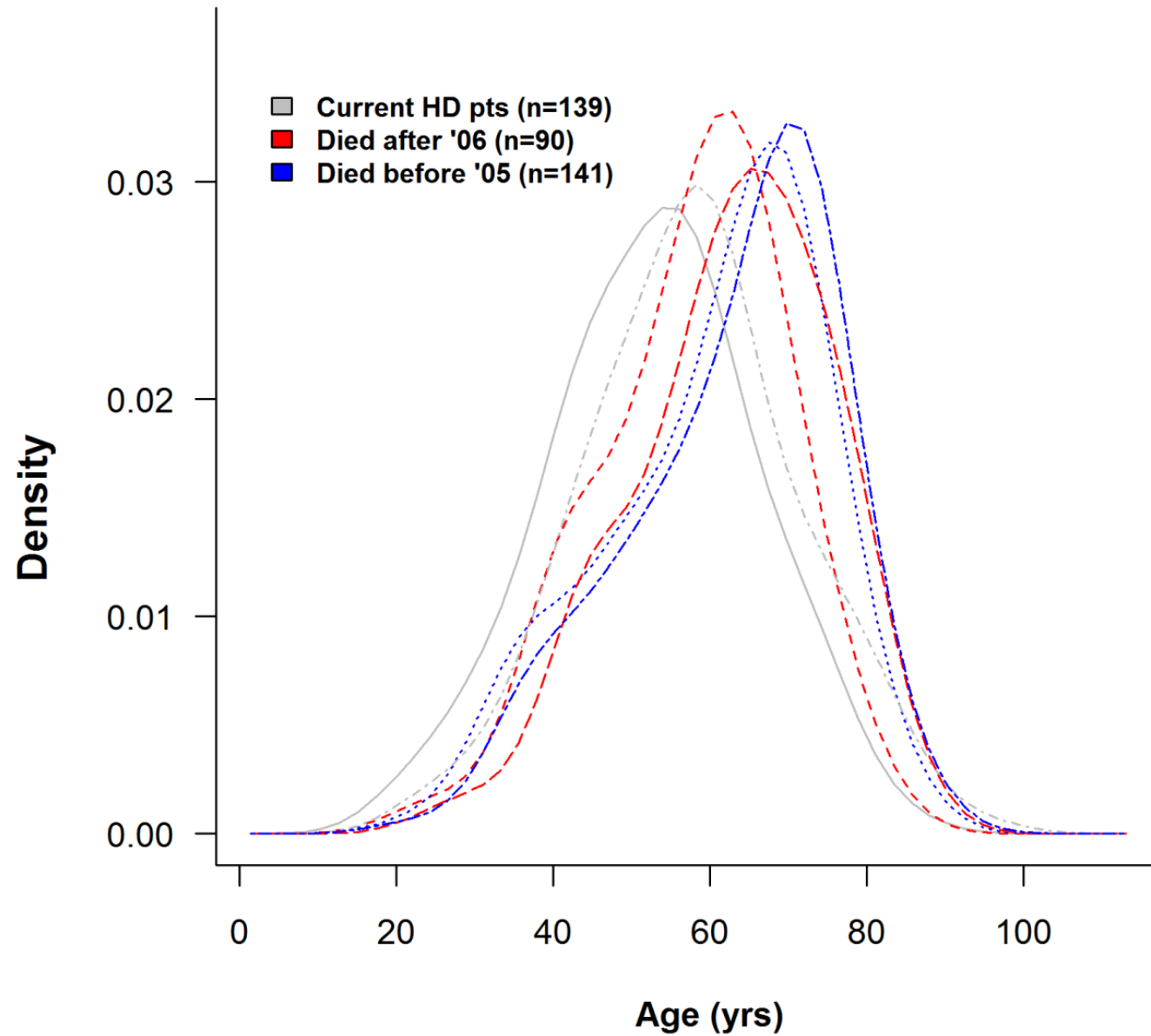
HD survival Black vs White (adjusted for age, sex)



HD survival 1997-2011 (adjusted for age, sex, race)

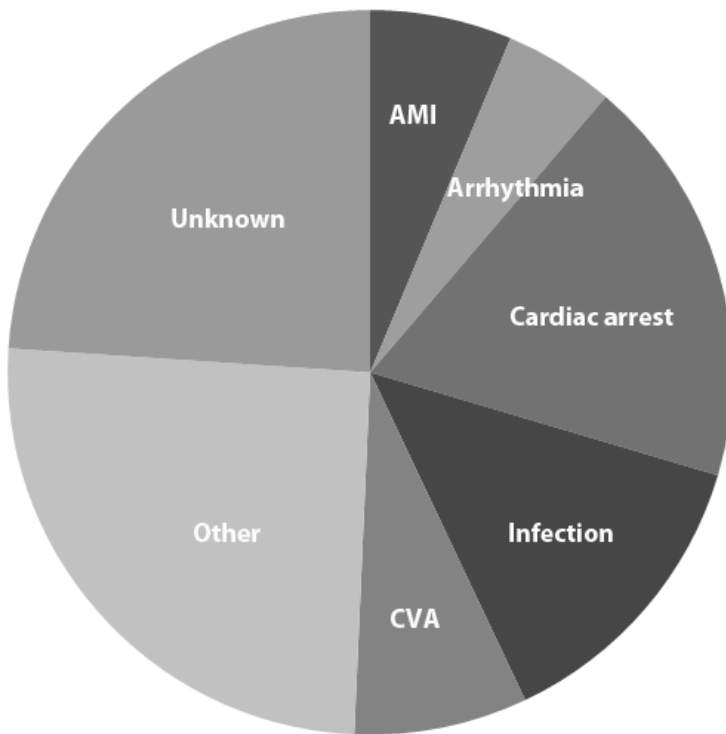


Age of initiation of dialysis - age of death

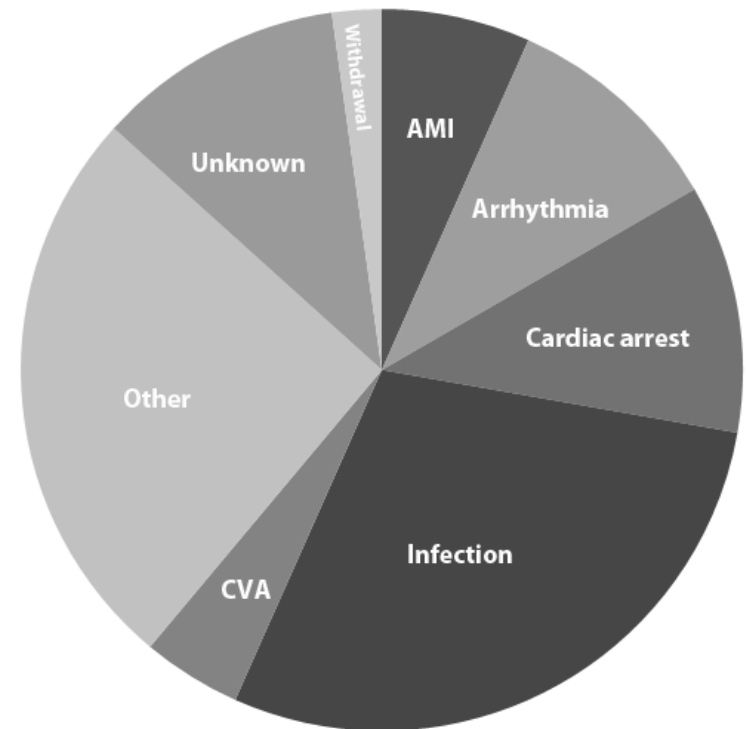


Cause of death

1997 - 2005 (n=141)

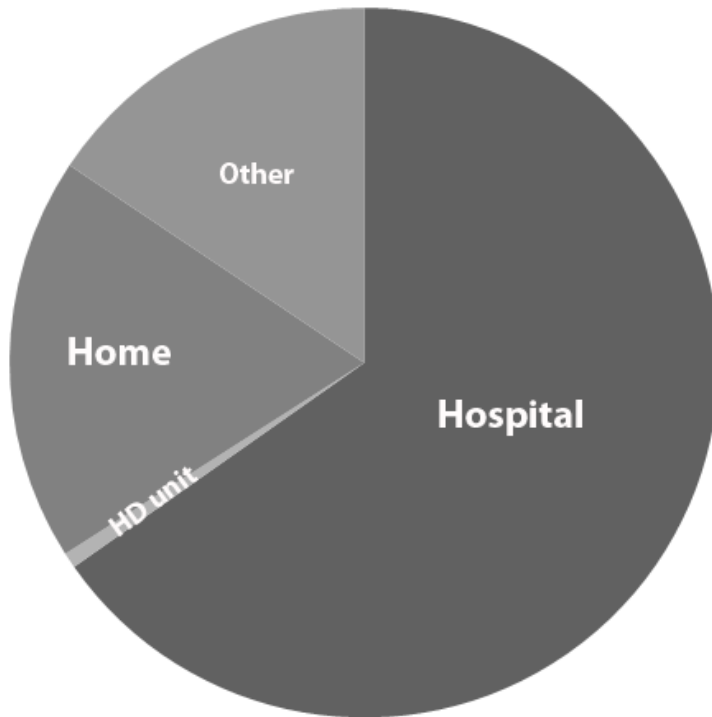


2006 - 2011 (n=90)



Place of death

1997 - 2005 (n=141)



2006 - 2011 (n=90)

